



The Ultimate
Driving Machine



THE X5

PRICE LIST
FROM DECEMBER 2019

CONTENTS.

Page 1	Contents
Page 2	The BMW X5 Introduction
Page 3	Exterior Equipment Highlights
Page 4	Interior Equipment Highlights
Page 5	Model Range – M50i/d Highlights
Page 7	Model Range – M Sport Highlights
Page 8	Model Range – xLine Highlights
Page 9	Model Range – xDrive45e Highlights
Page 11	Optional Package Highlights
Page 13	BMW ConnectedDrive
Page 15	Technical Information
Page 16	Pricing Information
Page 17	BMW EfficientDynamics / Paintwork / Upholstery / Interior trims / BMW Individual Interior Trims
Page 18	Packages
Page 19	Transmission / Safety and Technology / Steering and Chassis
Page 20	Seats / Exterior Equipment / Interior Equipment
Page 21	Audio and Communication
Page 22	360° ELECTRIC
Page 23	Light Alloy Wheels
Page 24	BMW Pay Monthly Servicing & Trackstar
Page 25	Code Glossary
Page 26	BMW ConnectedDrive Services

www.bmw.co.uk/X5



Personalise and buy your perfect BMW online. Find out more at www.bmw.co.uk/online-sales

THE BMW X5.

Setting the benchmark for pathbreaking design, the BMW X5 stands for confidence, functionality and pure experience. Boldly combining powerful elegance with poised dynamics, the BMW X5 introduces a new interpretation of the letter X. Now in its fourth generation, it reasserts itself as the leader of its segment through its striking front headlights and slender tail lights. The typical BMW Kidney grille also combines to create a self-contained ensemble on the BMW X5.

The new BMW ConnectedDrive offering on the BMW X5 means that you are more connected than ever before. Included as standard, the BMW Live Cockpit Professional and Connected Package Professional enhance the functionality of your Ultimate Driving Machine. Featuring Apple CarPlay® preparation, Concierge Services and Remote Services, the new BMW X5 ensures that you are kept connected with the outside world.

The Boss – embodiment of X.

BMW EFFICIENT DYNAMICS.

EfficientDynamics is BMW’s award-winning programme of technologies designed to reduce CO₂ emissions and improve fuel economy, without compromising on performance or driving dynamics. These technologies are standard on every new BMW and could lower your fuel and tax costs, as well as ensure a lower benefit in kind tax rating for company car drivers. You can find out more about the benefits of BMW EfficientDynamics, as well as compare your own vehicle against any new BMW X5 model at:

<https://discover.bmw.co.uk/technology/efficientdynamics>



Auto Start-Stop function



Brake Energy Regeneration



Electric Power Steering



BMW EfficientLightweight



Optimum Shift Indicator

BMW EFFICIENT DYNAMICS.
LESS EMISSIONS. MORE DRIVING PLEASURE.



EXTERIOR.

Turning heads wherever it goes, the BMW X5 is a sight that needs to be seen to be believed. Creating a bold stance, the striking appearance of the car is demonstrated through its polarising one-piece Kidney grille.

Embodying the X, the BMW X5 showcases a silhouette that speaks superiority. Continuing its strong heritage, the double swage lines, which run from the Air Breather to the rear of the car, emphasise the vehicle's wide, aesthetic look whilst the S-curve presents an athletic feel to the exterior.

Asserting itself as the boss, the slender headlight design is certain to capture admiring glances. For xLine and M Sport models, LED headlights are featured as standard. By selecting the optional BMW Laserlights, which are featured on the right, the range is increased to see an extra 500m in front – perfect for night time driving.

The M50i and M50d feature the hexagonal light ring shape of the Adaptive LED headlights as standard.

Perfectly complimenting the exterior, the range of light alloy wheels are perfectly proportioned to the car. For the first time, the BMW X5 is available with 22" light alloy wheels, further enhancing its striking appearance.



INTERIOR.

Compelling design flows from the outside inwards in the BMW X5. With high-quality Vernasca leather as standard, and optional third-row seating available for selected models, the BMW X5 combines generous space with high-class luxury to create a perfectly crafted interior.

Coupling the optional Sky Lounge Panoramic glass sunroof with the standard Ambient interior lighting design allows dynamic light flow throughout your BMW X5 and builds a luxurious atmosphere for any drive. The optional handmade CraftedClarity glass decorates the iDrive controller, Start/Stop button, volume control and gear selector, producing a pure aesthetic in the front cabin.

Introducing the latest iDrive system – BMW Operating System 7.0. The BMW X5 features more connectivity than ever before through the standard ConnectedDrive packages – BMW Live Cockpit Professional and Connected Professional.



MODEL RANGE.

The BMW X5 is available in a variety of trim levels, each providing a different level of standard specification. Below highlights some of the equipment differences between the trim levels, whilst further details can be found in the BMW X5 brochure.

M50i/d HIGHLIGHTS In addition / replacement to M Sport models

- 22" M light alloy V-spoke style 747 M wheels
- Active Protection
- Adaptive LED headlights
- Adaptive M suspension
- BMW TwinPower Turbo eight-cylinder petrol engine (M50i only)
- BMW TwinPower Turbo six-cylinder in-line diesel engine (M50d only)
- Door sill finishers with illuminated M50i/d designation, front and rear
- Exhaust tailpipes - single, left and right, Cerium Grey
- Exterior mirror housing, Kidney grille and side gill finished in Cerium Grey
- Exterior trim, BMW Individual High-gloss Shadowline
- Headlining, Anthracite
- Loudspeaker system – harman/kardon
- M50i/d badge on tailgate, right, Cerium Grey
- M badge, left and right side panels, Cerium Grey
- M seat belts
- M Sport exhaust system
- M Sport differential



22" M light alloy V-spoke style 747 M wheels



Exhaust tailpipes – single, right and left, in Cerium Grey



Loudspeaker system – harman/kardon



X5 M50i	RRP from £71,900 inc. VAT
X5 M50d	RRP from £69,900 inc. VAT

The BMW X5 M50d model is shown above in Carbon Black metallic paint. The models shown on these pages may feature optional equipment. Standard equipment may also vary depending on engine variant. Not all trim levels are available on all engine variants. For further details contact your local BMW Retailer.

MODEL RANGE.

M SPORT HIGHLIGHTS In addition / replacement to respective xLine models

- 20" M light alloy Star-spoke style 740 M wheels
- BMW Individual Roof rails, High-gloss Shadowline
- Door sill inlays with illuminated BMW M designation
- Exterior trim, BMW Individual High-gloss Shadowline
- Headlining, Anthracite
- Instrument panel in Sensatec (excluding xDrive30d)
- Interior trim, Aluminium Tetragon
- M aerodynamic bodystyling
- M designation on front side panels, left and right
- M Leather steering wheel
- M-specific floor mats, velour
- M-specific key
- M-specific pedals
- M-specific steering wheel
- M Sport braking system
- Run-flat tyres



X5 RRP from £59,380 inc. VAT

The BMW X5 M Sport model is shown above in Mineral White metallic paint.

xLINE HIGHLIGHTS

- 19" light alloy V-spoke style 735 wheels
 - Active Air Stream Kidney grille, High-gloss Chrome
 - Adaptive two-axle air suspension
 - Ambient interior lighting – six pre-designed selectable light designs including dynamic function
 - BMW Gesture Control
 - BMW Live Cockpit Professional, comprising:
 - 12.3" Control Display with Touch Function
 - BMW Intelligent Personal Assistant
 - BMW Operating System 7.0
 - iDrive Controller with Touch Function
 - Intelligent Functionalities
 - Remote Software Upgrade
 - Brake lights with LED technology, Dynamic
 - Connected Package Professional
 - DAB tuner
 - Eight-speed automatic transmission with Steptronic transmission and gearshift paddles
 - Enhanced Bluetooth with wireless charging
 - Exhaust tailpipes – single, left and right, Chrome
 - Floor mats, velour
 - HiFi loudspeaker system
 - Instrument panel in Sensatec
 - Interior trim, Dark Aluminium Mesh effect
 - LED foglights
 - LED headlights
 - Parking Assistant
 - Rain sensor with automatic headlight activation and windscreen wiper control
 - Roof rails, Matt Aluminium
 - Seat adjustment – front, electric with driver memory
 - Seat heating, front
 - Sport seats, front
 - Tailgate operation, automatic
 - Tyre pressure monitoring
 - Vernasca leather
 - WiFi hotspot preparation
- ### xDRIVE40i xLINE

In addition / replacement to xDrive30d xLine

 - BMW TwinPower Turbo six-cylinder in-line petrol engine



X5 RRP from £55,880 inc. VAT

The BMW X5 xLine model is shown above in Phytomic Blue metallic paint.

THE NEW BMW X5 xDRIVE45e.

Featuring innovative BMW eDrive and EfficientDynamics technologies, the BMW X5 xDrive45e provides impressive levels of performance and efficiency. Offering the best of both worlds, this Plug-in Hybrid Electric Vehicle (PHEV) combines a powerful petrol engine with an electric motor that is powered by a lithium-ion battery, overall providing an exceptional pure electric driving range with the flexibility of a combustion engine. The BMW X5 xDrive45e is everything you would expect from a BMW and more, with electrifying driving pleasure, this represents the future of the Ultimate Driving Machine.

The BMW X5 xDrive45e – plug into the future today.

xDRIVE45e HIGHLIGHTS In addition / replacement to xLine models

- 19" light alloy V-spoke style 735 wheels
- BMW TwinPower Turbo six-cylinder in-line petrol engine
- Charger Cable, 5 meters in length (Mode 2 cable)
- Charging Flap on the front side, left
- Double VANOS
- eDrive button to select between AUTO eDrive, MAX eDrive and SAVE Battery settings
- High Precision Injection
- Petrol Particulate Filter
- Twin-scroll turbocharger with Valvetronic



Pure electric range of up to 54 miles



Charging time 0-80% in <5 hours (based on a current of 16A)*



Low CO₂ emissions from 39-41g/km



X5 xDRIVE45e

RRP from £62,260 inc. VAT

Key
* = Dependent on the local electricity infrastructure. Charging time corresponds to a charge of 80% of maximum capacity and based on a single-phase supply current of max 32A.
The new BMW X5 xDrive45e is shown above in Mineral White metallic paint. Figures are for comparison purposes and may not reflect real life driving results which depend on a number of factors including the starting charge of the battery, accessories fitted (post registration), variations in weather, driving styles and vehicle load. They were obtained using a combination of battery power and fuel. The BMW X5 xDrive45e is a plug-in hybrid vehicle requiring mains electricity for charging. All figures were determined according to a new test (WLTP). The CO₂ figures were translated back to the outgoing test (NEDC) and will be used to calculate vehicle tax on first registration. Only compare fuel consumption, CO₂ and electric range figures with other cars tested to the same technical procedure.



Click here to discover the key benefits of the BMW PHEV range.

OPTIONAL PACKAGE HIGHLIGHTS.

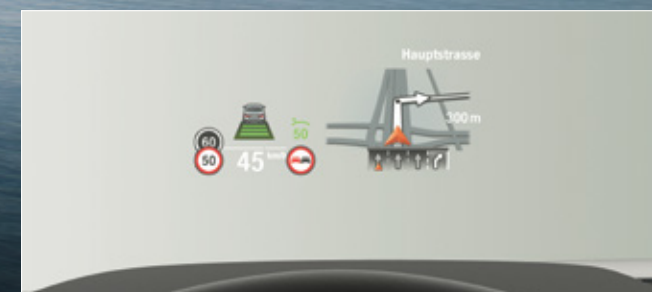


COMFORT PACKAGE.

Comfort package provides convenience as well as functionality to the BMW X5.

- At the push of a button, seat heating can be activated for the driver and front passenger providing a comfortable temperature for cold days
- Comfort access with smart-opener allows greater convenience when entering the vehicle through the front doors or operating the tailgate
- Comfort seats for the front passenger and driver create a more relaxed feel in the interior

See page 18



TECHNOLOGY PACKAGE.

A tailored combination of advanced technologies that provide superior convenience and practicality.

- An impressive interior sound is created through the harman/kardon loudspeaker system¹
- Head-up Display shows current speed, navigation guidance, music and telephone listings at the driver's line of sight
- Parking Assistant Plus includes camera-based assistance systems that uses Surround View and Remote 3D View to enhance your parking experience

See page 18



COMFORT PLUS PACKAGE.

Including the full functionality of Comfort package and much more, the Comfort Plus package creates a relaxing ambience for every drive.

- The Cupholder, featured in the centre console, allows the driver and front passenger to store hot and cold drinks at an appropriate temperature
- Calming and welcoming scent for the interior of your vehicle thanks to Ambient air package
- Massage function, for the driver and front passenger, makes travelling extremely pleasant and relaxing

See page 18



VISIBILITY PACKAGE.

An intelligent light system that illuminates the road for greater visibility.

- Doubling the range of other headlights, BMW Laserlights allow you to see up to 500 metres in front
- High-beam Assistant automatically adjusts the high-beam headlights in response to oncoming traffic

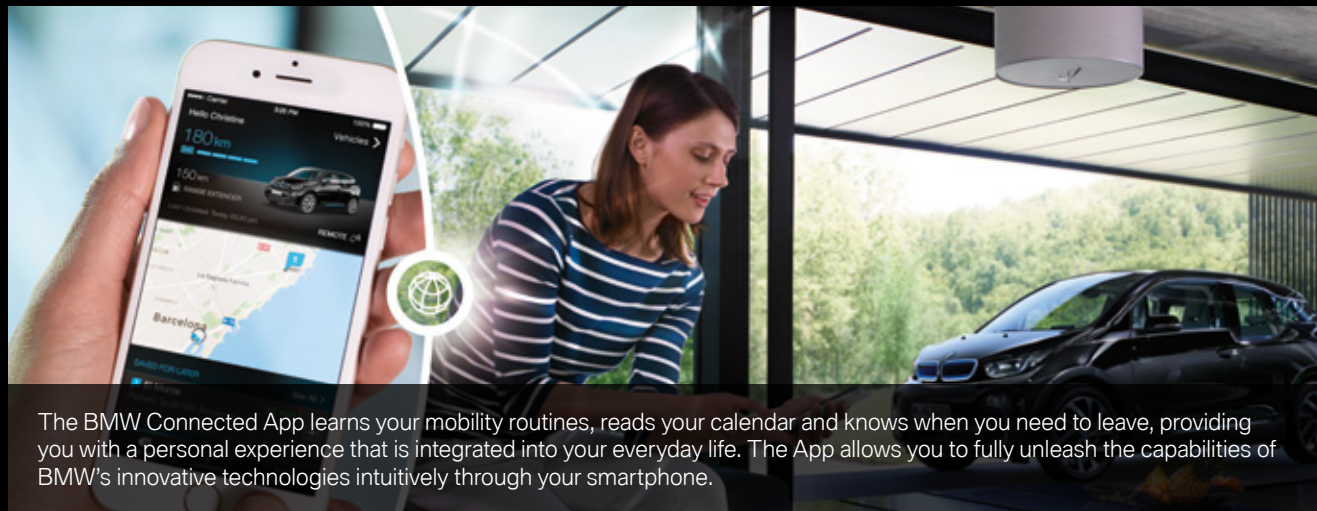
See page 18

Key

¹ = Bowers & Wilkins Diamond Surround Sound System is available as a cost alternative.

The BMW Connected App.

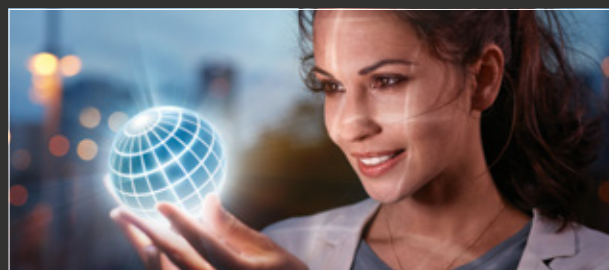
Your personal mobility assistant.



The BMW Connected App learns your mobility routines, reads your calendar and knows when you need to leave, providing you with a personal experience that is integrated into your everyday life. The App allows you to fully unleash the capabilities of BMW's innovative technologies intuitively through your smartphone.

● BMW LIVE COCKPIT PROFESSIONAL

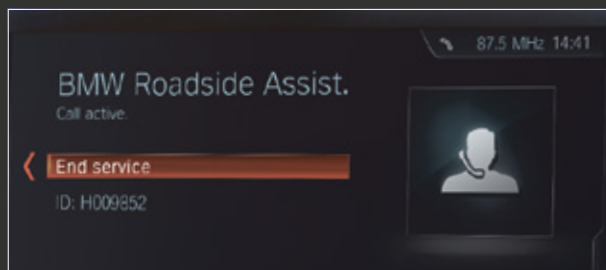
The brand new infotainment, navigation and multimedia system (BMW Operating System 7.0) provides cutting edge innovations as standard. Incorporating new generations of professional multimedia, BMW Live Cockpit Professional features touch-capable, high resolution control display, fully digital instrument panel and includes the ConnectedDrive digital services below:



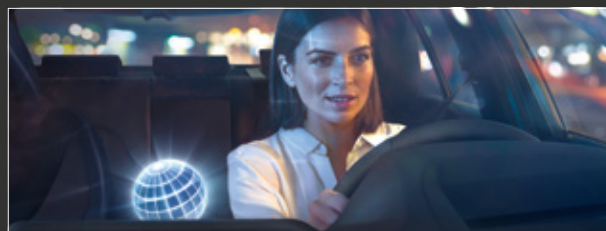
● **Apps** makes it possible to operate smartphone apps, such as BMW Connected and web radio conveniently and securely via the iDrive Controller and Control Display.¹



● **BMW Emergency Call** automatically establishes a direct link to the local emergency services and sends details of your vehicle location and severity of the accident.²



● **BMW TeleServices** transmits vehicle-specific service data and supports the processing of servicing appointments. It can also help you request help in the event of a breakdown.²



● The **BMW Intelligent Personal Assistant** is a revolutionary way to interact with your BMW and even has the ability to learn driver preferences. Intuitive operation options can be activated through voice command by saying "Hey BMW".^{1,3}

● **Intelligent Functionalities** creates customised rules and learns the driver's habits to enable greater comfort on every journey.^{1,3}

● **Map Updates** – Automatically update maps in your BMW by downloading Over-the-Air via the on-board sim card or upload from a USB.¹

● **Intelligent Voice Control** understands natural speech as well as linguistic varieties and dialects thanks to off-board voice processing.¹

BMW ConnectedDrive.

More connected than ever before.

● CONNECTED PACKAGE PROFESSIONAL.



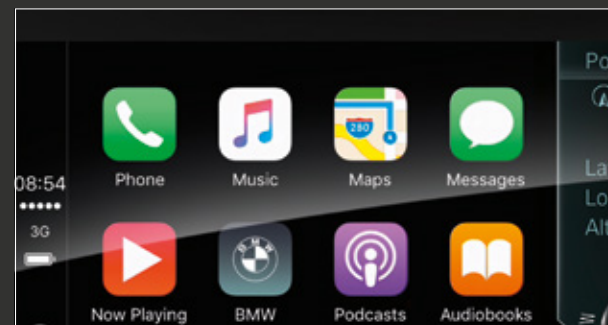
● **Remote Services** allows you to remain connected to your vehicle wherever you are, send destinations, find your vehicle as well as locking and unlocking your doors.¹



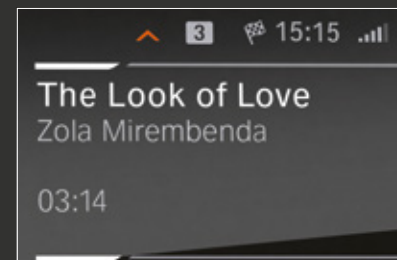
● **Concierge Services** connects the driver to a BMW Call Centre agent who is available as their around-the-clock personal assistant.¹



● And thanks to **In-Car Experiences**, your BMW will take care of you and adapt the interior ambience to suit your mood.³



● **Apple CarPlay® preparation** enables wireless usage of your iPhone® in your vehicle via Apple CarPlay® and is operated via the vehicle's user interface.²



Thanks to **Connected Music**, you can experience unlimited streaming of millions of songs from BMW's music partners Spotify, Deezer or Napster via the SIM card in the vehicle.¹



● **Real Time Traffic Information** supplies details about the location and duration of delays, also includes Hazard Preview and On-street Parking Information.¹



● **Connected Navigation** makes route planning easier, anticipates road conditions and provides estimated time of arrival, plus multiple map views with split screen options.¹

● CONNECTED TEASER.

Available with Connected Package Professional and offers a three month trial of the following services:



BMW Music, powered by Napster, brings your favourite music to your BMW. Get access to millions of songs and thousands of audio books with a single click.⁴

Key
● = Standard ○ = Optional The information above is subject to change. Actual Control Display and content on the BMW X5 may vary from the images shown. ¹ = Available and active for three years. Can be extended or renewed thereafter at an extra cost. ² = Available and active without runtime limitations. Usage cannot be guaranteed permanently due to potential future technical developments (of the Service availability and/or Smartphone compatibility/operating systems). ³ = Full functionality dependent on optional equipment selected. ⁴ = Available and active for three months. Can be extended or renewed thereafter at an extra cost.

THE BMW X5.

TECHNICAL INFORMATION.

Model	Power output (hp)	0-62mph (secs)	Fuel consumption – combined (mpg / l/100km)*	CO ₂ emissions – combined (g/km)*
-------	-------------------	----------------	--	--

PETROL				Wheel cluster 1*	Wheel cluster 2*
xDrive40i xLine	340	5.5	28.0-25.7 / 10.1-11.0	183	187
xDrive40i M Sport	340	5.5	28.2-25.9 / 10.0-10.9	183	187
xDrive45e xLine	286^	5.6	235.4-188.3 / 1.2-1.5	39	41
xDrive45e M Sport	286^	5.6	235.4-188.3 / 1.2-1.5	39	41
M50i	530	4.3	23.2-22.6 / 12.2-12.5	238	238

DIESEL					
xDrive30d xLine	265	6.5	37.2-34.0 / 7.6-8.3	159	162
xDrive30d M Sport	265	6.5	37.2-34.0 / 7.6-8.3	159	162
M50d	400	5.2	34.0-32.8 / 8.3-8.6	181	181

PRICES AND SPECIFICATIONS

BMW (UK) Limited reserves the right to alter prices and specifications without notice. BMW (UK) Limited has made every effort to ensure the accuracy of information but does not accept liability for any errors or omissions.

Key
* = These figures are for comparison purposes and may not reflect real life driving results which depend on a number of factors including the starting charge of the battery, accessories fitted (post registration), variations in weather, driving styles and vehicle load. For plug-in hybrid vehicles they were obtained using a combination of battery power and fuel, for battery electric vehicles after the battery had been fully charged. Plug-in hybrid and battery electric vehicles require mains electricity for charging. The fuel consumption, CO₂ and electric range figures were determined according to a new test (WLTP). The CO₂ figures were translated back to the outgoing test (NEDC) and will be used to calculate vehicles tax on first registration. Only compare fuel consumption, CO₂ and electric range figures with other cars tested to the same technical procedure. ^ = Combined power from Petrol and Electric engines + = Wheel cluster 1 consists of the following 19" wheel: 1SC, the following 21" wheel: 1SM, and the following 22" wheels: 1PA and 1S9. Wheel cluster 2 consists of the following 20" wheels: 1TC, 1SE, and the following 21" wheels: 1XN and 1XD.

PRICING INFORMATION.

Model	Basic price (excluding VAT)	VAT 20%	RRP (including VAT)	On the road price	P11d value	BIK tax rate (2019 / 2020) ¹	VED band ¹	Insurance group
-------	-----------------------------	---------	---------------------	-------------------	------------	---	-----------------------	-----------------

PETROL								
xDrive40i xLine	£47,383.33	£9,476.67	£56,860	£58,620	£57,710	37%	J	46
xDrive40i M Sport	£50,300.00	£10,060.00	£60,360	£62,120	£61,210	37%	J	46
xDrive45e xLine	£51,883.33	£10,376.67	£62,260	£63,165	£63,110	16%	B	TBC
xDrive45e M Sport	£54,800.00	£10,960.00	£65,760	£66,665	£66,610	16%	B	TBC
M50i	£59,916.67	£11,983.33	£71,900	£74,620	£72,750	37%	L	TBC

DIESEL								
xDrive30d xLine	£46,566.67	£9,313.33	£55,880	£57,640	£56,730	37%	I	45
xDrive30d M Sport	£49,483.33	£9,896.67	£59,380	£61,140	£60,230	37%	I	45
M50d	£58,250.00	£11,650.00	£69,900	£72,085	£70,750	37%	J	50

VED RATES

Annual VED (second year onwards) is £450 for cars costing over £40,000 and is payable for five years. VED rates for brand new cars are determined by their CO₂ emissions figure. First year VED applies to the first year of ownership. Annual VED rates apply thereafter. The BMW X5 models fall into one of the categories listed below:

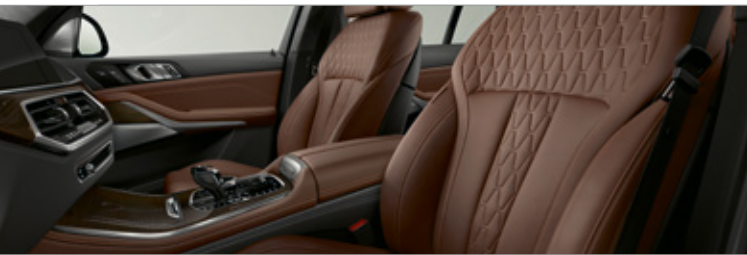
CO ₂ emissions (g/km)	Band B 1-50	Band I 151-170	Band J 171-190	Band L 226-255
First year VED (alternative)	£0	-	-	-
First year VED (petrol)	-	-	£855	£1,815
First year VED (diesel)	-	£855	£1,280	-
Annual VED (second year onwards)	£140	£140	£140	£140

Key
¹ = BIK tax rate and VED band dependent on chosen optional equipment. Insurance group figures refer to 50 Group Rating System.

ON THE ROAD PRICE

The recommended on the road price includes:
Delivery and BMW Emergency Service £825
Number plates £25
Vehicle first registration fee £55
First year Vehicle Excise Duty See left

STANDARD AND OPTIONAL EQUIPMENT.

	xDrive40i xLine	xDrive40i M Sport	xDrive45e xLine	xDrive45e M Sport	M50i	xDrive30d xLine	xDrive30d M Sport	M50d	Price

BMW EFFICIENT DYNAMICS

Auto Start / Stop	●	●	●	●	●	●	●	●	Std
Brake Energy Regeneration	●	●	●	●	●	●	●	●	Std
ECO PRO mode	●	●	●	●	●	●	●	●	Std
Lightweight Engineering	●	●	●	●	●	●	●	●	Std
Servotronic steering	●	●	●	●	●	●	●	●	Std
Individual BMW EfficientDynamics features may be excluded, depending on the optional equipment chosen. Your BMW Retailer will be pleased to provide you with more information.									

PAINTWORK

Metallic Available in Arctic Grey, Black Sapphire, Carbon Black ¹ , Mineral White, Phytonic Blue or Sophisto Grey ²	met	○	○	○	○	○	○	○	£0
Available in Ametrin or Tanzanite Blue II		○	○	○	○	○	○	○	£1,095
Non-metallic Available in Alpine White	uni	●	●	●	●	●	●	●	Std

UPHOLSTERY

Vernasca leather Available in Black with Brown contrast stitching and Black colour world Not with 456 as part of ZGM / ZGX	MA	-	●	-	●	●	-	●	●	Std
Vernasca design-perforated leather Available in Black with Black colour world, Coffee with Black colour world or Ivory White with Black colour world	MC	●	○	●	○	○	●	○	○	£0
BMW Individual Merino extended leather ² Available in Black with Black colour world, Coffee with Black colour world or Ivory White with Black colour world	VA	○	○	○	○	○	○	○	○	£995
Available in Ivory White with Night Blue colour world ³ Only with 456 as part of ZGM / ZGX Only with 778 (xLine models)	ZA	○	○	○	○	○	○	○	○	£1,495
BMW Individual Full Merino leather Available in Black, Coffee or Ivory White	ZB	○	○	○	○	○	○	○	○	£3,495
Available in Ivory White with Night Blue colour world Only with 4M5 + 775 + 778 Only with 456 as part of ZGM / ZGX		○	○	○	○	○	○	○	○	£3,995


INTERIOR TRIMS

Aluminium Tetragon	4KK	-	●	-	●	●	-	●	●	Std
Dark Aluminium Mesh effect	4KM	●	○	●	○	○	●	○	○	£0
Finewood Finline Stripe, Brown High-gloss	4KR	○	○	○	○	○	○	○	○	£250
Finewood trim, Poplar Grain, Anthracite Brown, open-pored	4KT	○	○	○	○	○	○	○	○	£250

BMW INDIVIDUAL INTERIOR TRIMS

Finewood Ash Grain Silver	4WW	○	○	○	○	○	○	○	○	£560
Finewood Finline Black with Aluminium inserts	XET	○	○	○	○	○	○	○	○	£560
Piano Black	4ML	○	○	○	○	○	○	○	○	£560

Key
● = Standard ○ = Optional - = Not available Not with = these options are not available for ordering together. Only with = these options must be ordered together.
/ = Indicates 'or' ¹ = Not available on xLine models. ² = Available on xLine models only. ³ = Only with 775, Anthracite headlining.


	xDrive40i xLine	xDrive40i M Sport	xDrive45e xLine	xDrive45e M Sport	M50i	xDrive30d xLine	xDrive30d M Sport	M50d	Price

PACKAGES

Packages provide an intelligent selection of individual options at a lower combined price, as well as contributing to the resale value of the vehicle.
Further options can still be specified even when a package is chosen.

Comfort package Comprises: – 322 Comfort Access with smart-opener – 417 Roller sunblind, rear side windows – 44A Cupholder temperate – 456 Comfort seats, front – 4HA Seat heating, front and rear Not with ZGX	ZGM	○	○	○	○	○	○	○	○	£2,350
Comfort Plus package Comprises: – 322 Comfort Access with smart-opener – 323 Soft-close doors – 417 Roller sunblind, rear side windows – 44A Cupholder temperate – 453 Seat ventilation, front – 456 Comfort seats, front – 4HA Seat heating, front and rear – 4NB Automatic air conditioning with four-zone control – 4NM Ambient Air package – 4T7 Massage function, front Not with ZGM	ZGX	○	○	○	○	○	○	○	○	£4,750
M Sport Plus package Comprises: – 1XN 21" M light alloy Y-spoke style 741 M wheels ¹ – 420 Sun protection glass ² – 4GQ M seat belts – 5AL Active Protection – 7M9 BMW Individual High-gloss Shadowline with extended contents Differing content: – 1MA M Sport exhaust system	ZMS	-	○	-	-	-	-	-	-	£2,250
		-	-	-	○	-	-	-	-	£1,900
Technology package Comprises: – 3DS BMW Display key – 5DN Parking Assistant Plus – 610 Head-up Display – 688 Loudspeaker system – harman/kardon ³ – 6DR Drive Recorder Alternative content – 6F1 Bowers & Wilkins Diamond Surround Sound System (alternative to 688) Only with 407	Z0J	○	○	○	○	-	○	○	-	£2,095
		-	-	-	-	○	-	-	○	£1,735
Visibility package Comprises: – 5AC High-beam Assistant – 5AZ BMW Laserlights	Z0C	○	○	○	○	-	○	○	-	£1,595
		-	-	-	-	○	-	-	○	£895

Key
○ = Optional - = Not available Not with = these options are not available for ordering together. / = Indicates 'or' Only with = these options must be ordered together.
¹ = 1PA and 1S9 available as a pack alternative at an additional cost. ² = Available as a single cost option. ³ = Standard for M50i and M50d.

	xDrive40i xLine	xDrive40i M Sport	xDrive45e xLine	xDrive45e M Sport	M50i	xDrive30d xLine	xDrive30d M Sport	M50d	Price
---	-----------------	-------------------	-----------------	-------------------	------	-----------------	-------------------	------	-------

TRANSMISSION

Sport automatic transmission ¹	2TB	●	●	●	●	●	●	●	●	Std
---	-----	---	---	---	---	---	---	---	---	-----


SAFETY AND TECHNOLOGY

Acoustic protection for pedestrians	4U9	-	-	●	●	-	-	-	-	Std
Active Guard	5AQ	●	●	●	●	●	●	●	●	Std
Adaptive LED headlights Includes 5AC	552	○	○	○	●	●	○	○	●	£700
Driving Assistant Professional Comprises: – Automatic Speed Limit assistant – Crossing Traffic Warning – Crossroads Warning with city braking function – Evasion aid – Lane keeping assistant with active side collision protections – Real time 3D environment – Steering and lane control assistant – Wrong way warning	5AU	○	○	○	○	○	○	○	○	£2,295
LED foglights	5A1	●	●	●	●	●	●	●	●	Std
Parking Assistant Comprises: – Active Park Distance Control – Lateral parking aid – Parking assistant – Rear view camera – Reversing assistant	5DM	●	●	●	●	●	●	●	●	Std
Parking Assistant Plus Comprises all functionality of Parking Assistant (5DM), plus: – Remote 3D View – Surround View Only with Z0J	5DN	○	○	○	○	○	○	○	○	n/a [†]

STEERING AND CHASSIS

Adaptive M suspension	2VF	-	-	-	-	●	-	-	●	Std
Adaptive M suspension Professional Includes 2VH Not with 2VR / 4UB	2VW	-	-	-	-	○	-	-	○	£3,195 ²
Adaptive two-axle air suspension Only with 2VH (M50d)	2VR	●	●	●	●	○	●	●	○	£1,150
Integral Active Steering Only with 2VR / 2VW / 4UB (M50d)	2VH	○	○	○	○	○	○	○	○	£995
Locking wheel bolts	2PA	●	●	●	●	●	●	●	●	Std
M Sport braking system	2NH	-	●	-	●	●	-	●	●	Std
M Sport differential	2T4	○	○	-	-	●	○	○	●	n/a [*]
Run-flat tyres ³	258	○	○	○	○	-	○	○	-	£0
Tyre pressure monitoring	2VB	●	●	●	●	●	●	●	●	Std
Tyre repair kit	2VC	○	○	○	○	●	○	○	●	£0

Key
● = Standard ○ = Optional – = Not available Not with = these options are not available for ordering together. Only with = these options must be ordered together. / = Indicates 'or' † = Exclusively available within package, see page 18 for package information. * = Only with 2VW / 3E3. ¹ = Includes Launch Control. ² = Price includes 2VH. ³ = Run-flat tyres available and included with selected alloy wheels. See page 23 for alloy wheels information.

	xDrive40i xLine	xDrive40i M Sport	xDrive45e xLine	xDrive45e M Sport	M50i	xDrive30d xLine	xDrive30d M Sport	M50d	Price
---	-----------------	-------------------	-----------------	-------------------	------	-----------------	-------------------	------	-------

SEATS

Heat comfort package, front	4HB	○	○	○	○	○	○	○	-	£350
M seat belts Included in ZMS	4GQ	-	○	-	○	●	-	○	●	n/a [†]
M multi-functional seats Only with MAH9 / VASW Not with 4FL	4MA	○	○	○	○	○	○	○	○	£1,095
Seat adjustment – front, electric with driver memory	459	●	●	●	●	●	●	●	●	Std
Sport seats, front	481	●	●	●	●	●	●	●	●	Std
Seat heating, front	494	●	●	●	●	●	●	●	●	Std
Third-row seating Only with 2VR (+ 2VH on M50d) + 456 / 4HB / 4FL Not with 2VH + 3E3	4UB	○	○	-	-	-	○	○	○	£1,390

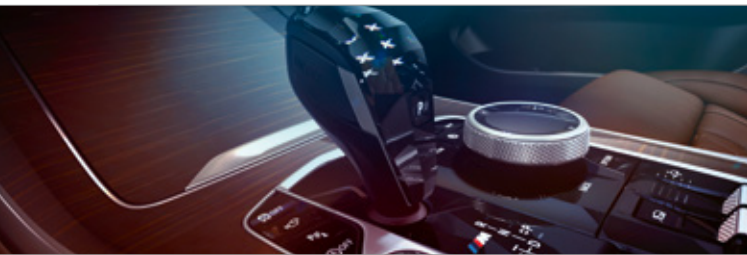
EXTERIOR EQUIPMENT

Aluminium running boards	328	○	-	○	-	-	○	-	-	£490
BMW Individual Exterior trim, High-gloss Shadowline Only with 3MC	760	○	●	○	●	●	○	●	●	£0
BMW Individual High-gloss Shadowline with extended contents Included in ZMS Only with ZMS for M Sport models	7M9	-	-	-	-	○	-	-	○	£265
BMW Individual Exterior trim, Satin Aluminium Only with 3AT	3MB	●	○	●	○	○	●	○	○	£0
BMW Individual Roof rails, High-gloss Shadowline Only with 760	3MC	○	●	○	●	●	○	●	●	£0
Expanded exterior mirror package	4T8	●	●	●	●	●	●	●	●	Std
M Sport exhaust system Only with ZMS	1MA	-	○	-	-	●	-	○	●	n/a [†]
Roof rails, Matt Aluminium Only with 3MB	3AT	●	○	●	○	○	●	○	○	£0
Towbar, fully electric	3AC	○	○	○	○	○	○	○	○	£995
xOffroad Pack Comprises: – Four xOffroad modes: xSand, xRocks, xGravel, xSnow – Mechanical differential lock – Specific pedal and gearshift characterists – Specific user interface – Visual enhancing and functional sump guard, front – xOffroad Driving Experience Control – xOffroad-specific xDrive adjustments Only with 2T4 + 2VR	3E3	○	○	-	-	-	○	○	-	£2,595

INTERIOR EQUIPMENT

Acoustic glazing Only with 420	3KA	○	○	○	○	○	○	○	○	£495
BMW Individual headlining, Alcantara Anthracite ¹	776	○	-	○	-	-	○	-	-	£1,435
		-	○	-	○	○	-	○	○	£1,100
BMW Individual instrument panel, leather	4M5	○	○	○	○	○	○	○	○	£1,250
Door sill finishers with BMW Individual designation Only with C1N / VA	778	○	-	○	-	-	○	-	-	£0

Key
● = Standard ○ = Optional – = Not available Not with = these options are not available for ordering together. Only with = these options must be ordered together. / = Indicates 'or' † = Exclusively available within package, see page 18 for package information. ¹ = In combination with VBEI contents are in Night Blue.

	xDrive40i xLine									
	xDrive40i M Sport									
	xDrive45e xLine									
	xDrive45e M Sport									
	M50i									
	xDrive30d xLine									
	xDrive30d M Sport									
	M50d									
										Price

INTERIOR EQUIPMENT (CONT.)

CraftedClarity glass application	4A2	o	o	o	o	o	o	o	o	£550
Headlining, Anthracite	775	o	●	o	●	●		o	●	£295
Instrument panel in Sensatec	4AW	●	●	●	●	●		●	●	Std
Luggage compartment package	418	o	o	-	-	o		o	o	£565
In conjunction with 4UB		o	o	o	o	o		o	o	£80
Luggage compartment separating net	413	o	o	o	o	o		o	o	£170
Sky Lounge Panoramic glass sunroof	407	o	o	o	o	o		o	o	£2,440
Sun protection glass	420	o	o	o	o	o		o	o	£390
Travel and Comfort System	4FL	o	o	o	o	o		o	o	£195

AUDIO AND COMMUNICATION

BMW Emergency Call ¹	6AF	●	●	●	●	●	●	●	●	Std
BMW Gesture Control	6U8	●	●	●	●	●		●	●	Std
BMW Live Cockpit Professional Comprises: – 12.3" Control Display with Touch Functionality – 12.3" Digital Instrument Display – BMW Intelligent Personal Assistant ² – BMW Operating System 7.0 – iDrive Controller with Touch Function – Intelligent Functionalities ^{2,3} – Remote Software Upgrade ² Further information can be found on pages 13-14	6U3	●	●	●	●	●		●	●	Std
BMW Online Services ^{2,3} Comprises: – BMW Apps – BMW Online Services – Intelligent Voice Control – USB and Over-the-air Map Updates	6AK	●	●	●	●	●		●	●	Std
BMW TeleServices ¹	6AE	●	●	●	●	●		●	●	Std
Connected Package Professional Comprises: – Apple CarPlay ^{1,4} – Concierge Services ^{2,3} – Connected Music ^{2,3} – Connected Navigation ^{2,3} – Connected Parking – Connected Teaser ^{5,6} – eDrive Services ^{3,7} – In-Car Experiences – Real Time Traffic Information ^{2,3} – Remote 3D View ⁸ – Remote Services ^{2,3} Further information can be found on pages 13-14	6C4	●	●	●	●	●		●	●	Std
DAB tuner	654	●	●	●	●	●		●	●	Std
Enhanced Bluetooth with wireless charging	6NW	●	●	●	●	●		●	●	Std
HiFi loudspeaker system	676	●	●	●	●	-		●	●	Std
Rear-seat entertainment Experience	6FH	o	o	o	o	o		o	o	£2,345
TV Function Plus	60A	o	o	o	o	o		o	o	£1,050
WiFi hotspot preparation ⁹	6WD	●	●	●	●	●		●	●	Std


Key
● = Standard o = Optional – = Not available ¹ = Available and active without runtime limitations. Usage cannot be guaranteed permanently due to potential future technical developments (of the Service availability and/or Smartphone compatibility/operating systems). ² = Active for three years, renewable thereafter at an additional cost. ³ = Requires a free BMW ConnectedDrive account. ⁴ = Functions using a data connection will use data from the SIM card in the iPhone®. Additional data charges may be applied by the mobile network provider. Compatibility and functions may vary due to the model year of the iPhone® and the version of software installed on it. ⁵ = Includes BMW Music for a three month trial. For further details visit page 14. ⁶ = Available and active for three months. Can be extended or renewed thereafter at an extra cost. ⁷ = Exclusively available on xDrive45e models for three years. ⁸ = Only in combination with 5DN. ⁹ = Data subscription costs apply and must be purchased separately.

	xDrive40i xLine									
	xDrive40i M Sport									
	xDrive45e xLine									
	xDrive45e M Sport									
	M50i									
	xDrive30d xLine									
	xDrive30d M Sport									
	M50d									
										Price

360° ELECTRIC

Digital Charging Service – 36 months subscription ¹	-	-	●	●	-	-	-	-	n/a
Home charging: BMW i Wallbox Connect (32 Amp) with Standard Installation ²	-	-	o	o	-	-	-	-	From £825 ⁺
Public Charging: BMW i AC Rapid Charge Cable (5 metre length) – Max 32 Amp 3-phase public charging cable, Type 2 connectors	-	-	o	o	-	-	-	-	£237
Public Charging: BMW i AC Fast Charge Cable (5 metre length) – Max 32 Amp 1-phase public charging cable, Type 2 connectors	-	-	o	o	-	-	-	-	£165
Public Charging: BMW i AC Fast Charge Cable (8 metre length) – Max 32 Amp 1-phase public charging cable, Type 2 connectors	-	-	o	o	-	-	-	-	£195
Public charging: ChargeNow – Pay as you go charging ³	-	-	o	o	-	-	-	-	£7.85 per month
Assistance Services – BMW i Mobile Care – Battery Warranty – Vehicle Warranty	-	-	●	●	-	-	-	-	n/a

Key
● = Standard o = Optional – = Not available + = Subject to OLEV subsidy and qualification which may be liable to change. For more information please see www.charging.bmwgroup.com/web/360electric-uk ¹ = 12 months subscription from production date only, renewable thereafter for £45 per annum via the ConnectedDrive Store. ² = Includes 3 year warranty. ³ = Available as a stand alone service. Terms and Conditions apply, find out more at www.chargenow.com Content correct at time of going to print. Prices subject to change. The design of the charging cable may vary from images shown.

	xDrive40i xLine	xDrive40i M Sport	xDrive45e xLine	xDrive45e M Sport	M40i	xDrive30d xLine	xDrive30d M Sport	M50d	Run-flat tyres	
										Price

LIGHT ALLOY WHEELS

19" V-spoke style 735	1SC	●	-	●	-	-	●	-	-	-	Std
20" M Star-spoke style 740 M, Bicolour	1TC	-	●	-	●	-	-	●	-	●	Std
20" V-spoke style 738, Bicolour	1SE	○	-	○	-	-	○	-	-	●	£1,575
21" M Y-spoke style 741 M, Bicolour	1XN	-	○	-	○	-	-	○	-	●	£1,350
21" Y-spoke style 744, Bicolour	1XD	○	-	○	-	-	○	-	-	●	£2,475
22" M V-spoke style 747 M, Bicolour	1SM	-	-	-	-	●	-	-	●	-	Std
22" M Double-spoke style 742 M, Bicolour	1PA	-	○	-	○	-	-	○	-	-	£1,995
		-	-	-	-	○	-	-	○	-	£0
		-	○	-	○	-	-	○	-	-	£645
In conjunction with ZMS											
22" BMW Individual V-spoke style 746 I	1S9	○	-	○	-	-	○	-	-	-	£3,250
		-	○	-	○	-	-	○	-	-	£2,250
		-	-	-	-	○	-	-	○	-	£250
		-	○	-	○	-	-	○	-	-	£900
In conjunction with ZMS											



19" V-spoke style 735



20" M Star-spoke style 740 M, Bicolour



20" V-spoke style 738, Bicolour



21" M Y-spoke style 741 M, Bicolour



21" Y-spoke style 744, Bicolour



22" M V-spoke style 747 M, Bicolour



22" M Double-spoke style 742 M, Bicolour



22" BMW Individual V-spoke style 746 I

Key
● = Standard ○ = Optional – = Not available / = Indicates 'or' Content correct at time of going to print. Prices subject to change.

BMW PAY MONTHLY SERVICING & TRACKSTAR.

SERVICING MADE SIMPLE.

Planning for the road ahead has never been easier. With the BMW Pay Monthly Service Plan¹ you can remove the uncertainty often associated with car servicing costs by spreading them monthly, much like you would your household bills. Our Pay Monthly service plan covers two services and any unused credit can be transferred to another BMW if you decide to switch unexpectedly. As part of the Pay Monthly plan you will also receive a number of added extras including:

- Fluid top ups
- An MOT
- A Wash & Vac each time you visit
- Seasonal health checks
- Sat Nav Map updates

Get the quality service and parts you expect from BMW with a fixed monthly payment. Give your BMW the care and attention it deserves from the experts that made it.

Price: £30 per month for 36 months

Please contact your preferred BMW Centre for further information.

BMW TRACKSTAR.

Locate and recover your vehicle if it is stolen with BMW Trackstar or BMW Trackstar Advance. Benefits include:

- 24/7 Trackstar Monitoring Centre
- Thatcham accredited
- Integrated motion sensor
- Pan-European protection

BMW Trackstar S7 price from: £399²

BMW Trackstar S5 price from £549²

BMW Trackstar S5 Advance price from: £649²



¹ = Participating Retailers only. Two services must be claimed within four years or 40,000 miles, whichever occurs soonest. ² = Price excludes subscription.
Please consult your preferred BMW Centre for further details. Content correct at time of going to print. Prices subject to change.

CODE GLOSSARY.

1MA	M Sport exhaust system	4A2	Glass application CraftedClarity	676	HiFi loudspeaker system
258	Run-flat tyres	4AW	Instrument panel in Sensatec	688	Loudspeaker system – harman/kardon
2NH	M Sport braking system	4FL	Travel and Comfort system	6U3	BMW Live Cockpit Professional
2PA	Locking wheel bolts	4GQ	M Seat belts	6U8	BMW Gesture Control
2TB	Sport automatic transmission	4HA	Seat heating, front and rear	6AE	BMW TeleServices
2T4	M Sport differential	4HB	Heat comfort package, front	6AK	BMW Online Services
2VB	Tyre pressure monitoring	4KM	Interior trim, Dark Aluminium Mesh effect	6CP	Apple CarPlay®
2VC	Tyre repair kit	4KK	Interior trim, Aluminium Tetragon	6C4	Connected Package Professional
2VF	Adaptive M suspension	4KR	Interior trim, Finewood Fineline Stripe, Brown High-gloss	6DR	Drive Recorder
2VH	Integral Active Steering	4KT	Interior trim, Finewood trim, Poplar Grain, Anthracite-Brown, open-pored	6F1	Bowers & Wilkins Diamond Surround Sound System
2VR	Adaptive two-axe air suspension			6FH	Rear-seat entertainment Experience
2VW	Adaptive M suspension Professional			6NW	Enhanced Bluetooth with wireless charging
322	Comfort Access with smart-opener	4MA	M multi-functional seats	6WD	WiFi hotspot preparation
323	Soft-close doors	4M5	BMW Individual instrument panel, leather	760	BMW Individual exterior trim, High-gloss Shadowline
328	Aluminium running boards	4ML	BMW Individual interior trim, Piano Black	775	Headlining, Anthracite
3AC	Towbar, fully electric	4NB	Air conditioning, automatic with four-zone control	778	Door sill finishers with BMW Individual designation
3AT	Roof rails, Matt Aluminium	4NM	Ambient Air package	7M9	BMW Individual High-gloss Shadowline with extended contents
3DS	BMW Display key	4T7	Massage function, front	MA	Vernasca leather upholstery
3E3	xOffroad Pack	4T8	Exterior mirrors – folding with anti-dazzle	MC	Vernasca leather, design-perforated upholstery
3KA	Acoustic glazing	4UB	Third-row seating	VA	BMW Individual Merino extended leather upholstery
3MB	BMW Individual exterior trim, Satin Aluminium	4WW	BMW Individual interior trim, Finewood, Ash Grain Silver	ZB	BMW Individual Full Merino leather
3MC	BMW Individual Roof rails, High-gloss Shadowline	552	Adaptive LED headlights	met	Metallic paintwork
407	Sky Lounge Panoramic glass sunroof	5A1	LED foglights	uni	Non-metallic paintwork
413	Luggage compartment separating net	5AC	High-beam Assistant	XET	BMW Individual interior trim, Finewood Fineline Black with Aluminium inserts
417	Roller sunblind	5AL	Active Protection	ZGM	Comfort package
418	Luggage compartment package	5AQ	Active Guard Plus	ZGX	Comfort Plus package
420	Sun protection glass	5AU	Driving Assistant Professional	ZMS	M Sport Plus package
44A	Cupholder temperate	5AZ	BMW Laserlights	ZOC	Visibility package
453	Seat ventilation, front	5DM	Parking Assistant	Z0J	Technology package
456	Comfort seats, front	60A	TV Function Plus		
459	Seat adjustment – front, electric with driver memory	610	Head-up Display		
481	Sport seats, front	654	DAB tuner		
494	Seat heating, front				

BMW CONNECTED DRIVE SERVICES.

BMW ConnectedDrive keeps driver and vehicle connected with the outside world. Digital services, driver-focused technologies and driver assistance systems provide more comfort, more entertainment and more safety. Increase your driving pleasure – with BMW ConnectedDrive.

For further information on BMW ConnectedDrive and the General Terms and Conditions of Service for ConnectedDrive, please see: www.bmw.co.uk/connecteddrive-information

The BMW ConnectedDrive Hotline is available on: +44 (0) 800 561 0555 from Monday to Friday 8am – 7pm and Saturday to Sunday 9am – 5pm.



GENERAL INFORMATION

BMW (UK) Ltd, Summit ONE, Summit Avenue, Farnborough, Hampshire, GU14 0FB (hereinafter referred to as “BMW”) provides the customer with certain vehicle-related information and assistance functions (hereinafter called “Services”) under the name of “BMW ConnectedDrive”. BMW collects, stores or processes car-related data in compliance with applicable law and only to the extent necessary to provide the Services. BMW does not collect, store or process personal data in course of the Services – except where this is explicitly stated in the service description of the individual Services. In the case of Services that require personal data to be collected, stored and processed so that such Services can actually be provided, BMW informs customers of this in advance by providing this data protection notice The Services are provided by means of a SIM card installed in the vehicle.

CONNECTED DRIVE SERVICES DURATION

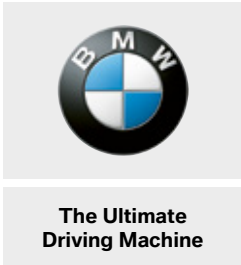
BMW Music	3 month trial
Apps	3 years
BMW Intelligent Personal Assistant	3 years
BMW Online Services	3 years
Concierge Services	3 years
Connected Music	3 years
Connected Navigation	3 years
eDrive Services (xDrive45e only)	3 years
In-Car Experiences	3 years
Intelligent Functionalities	3 years
Intelligent Voice Control	3 years
Map Updates	3 years
Real Time Traffic Information	3 years
Remote Services	3 years
Remote Software Upgrade	3 years
Apple CarPlay® Preparation	Active without runtime limitations
BMW Emergency Call	Active without runtime limitations
BMW TeleServices	Active without runtime limitations

DEACTIVATION

You can have the BMW ConnectedDrive services deactivated through an authorized BMW centre, a BMW subsidiary or a BMW authorised workshop at any time. This also has the consequence that aspects of the emergency call in the vehicle as well as all remaining Services will no longer function. You can additionally arrange for the remaining Services to be deactivated via “My BMW ConnectedDrive”.

If the vehicle is equipped with the legally required EU Emergency Call (as from April 2018) a deactivation of the BMW ConnectedDrive basic services will not deactivate the vehicle's built-in SIM card. It has to remain active, so that the EU Emergency Call is functional all the time.

Services that are available and active without runtime limitations, cannot be guaranteed for permanent usage due to potential future technical developments (of the Service availability and/or Smartphone compatibility/operating systems).



A digital version of the BMW X5 brochure is also available. Simply click on your device icon above, download the brochure app and select the desired model.

