

Original BMW Parts and Accessories. Installation Instructions.



M Performance Carbon Exterior Components Retrofit Kit. BMW X5 (G05)

Retrofit kit number

51 19 2 461 277	Rear carbon winglet, left
51 19 2 461 278	Rear carbon winglet, right
51 19 2 455 499	Front carbon winglet, left
51 19 2 455 500	Front carbon winglet, right
51 19 2 455 432	Carbon rear diffuser

Installation time

The total installation time is **approx. 0.5 hours** for the installation of all the winglets and **approx. 0.5 hours** for the installation of the rear diffuser. These times may vary depending on the condition of the car and the equipment in it.

The installation time shown does not include any time spent on programming/coding.

The calculation of the total costs for the programming time must be factored into the calculation of retrofitting costs (must not be invoiced under the warranty).

Important information

These installation instructions are primarily designed for use within the BMW dealership organisation and by authorised BMW service companies.

These installation instructions are intended for use by qualified specialist staff trained on BMW cars with the relevant expert knowledge.

All work must be completed using the latest BMW repair manuals, wiring diagrams, servicing manuals and work instructions, in a logical order, using the prescribed tools (special tools), and observing current health and safety regulations.

If you experience installation or function problems, restrict troubleshooting to approx. 0.5 hours for mechanical work and 1.0 hour for electrical work.

To avoid unnecessary extra work and/or costs, send an inquiry straight away to the technical parts support team via the Aftersales Assistance Portal (ASAP).

Quote the following information:

- VIN,
- retrofit kit part number,
- a detailed description of the problem,
- any work already carried out.

Do not archive the hard copy of these installation instructions, since daily updates are supplied in ASAP!

Pictograms



Denotes instructions that draw your attention to dangers.



Denotes instructions that draw your attention to special features.



Denotes the end of the instruction or other text.

Installation information

All illustrations show LHD (left-hand drive) cars; proceed similarly on RHD (right-hand drive) cars. Installation is shown on one side of the car only, proceed in the same way on the other side.

Bonding surfaces must be cleaned with a cleaner and must be clean and free from wax and grease. The ambient temperature for bonding and drying must not be below 15 °C or exceed 35 °C . The car may be driven after **approx. 6 hours** and may be taken through a car wash after **approx. 48 hours**.

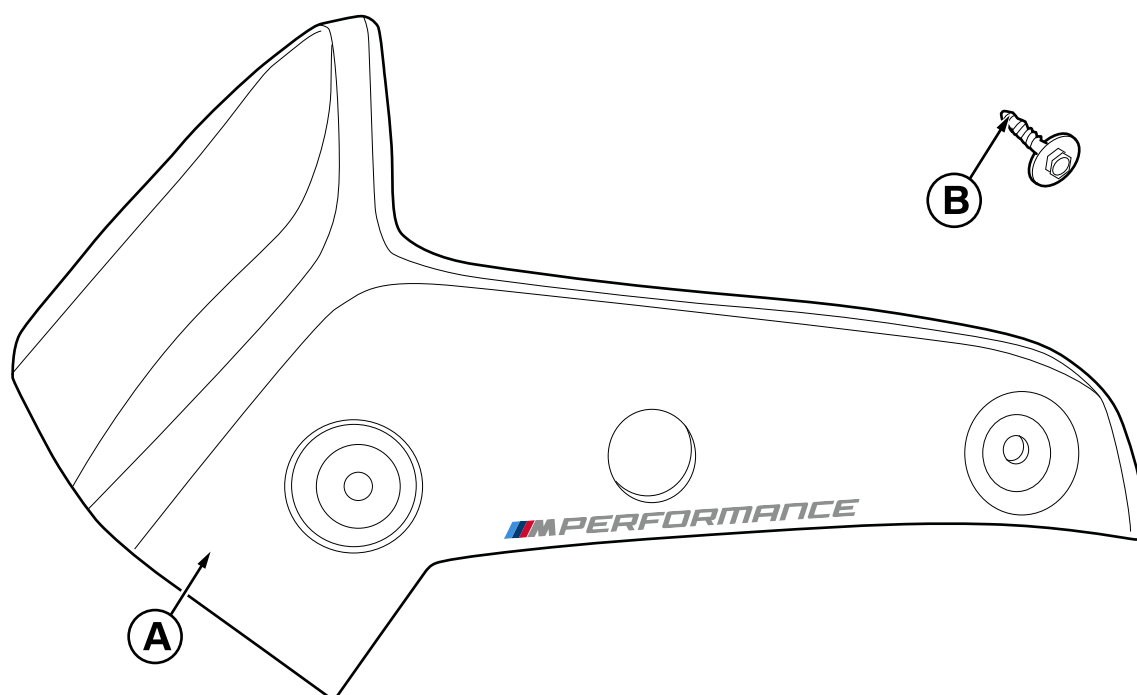
Special tools required

None

Table of contents

Section	Page
1. Front carbon winglet parts list	4
2. Rear carbon winglet parts list	5
3. Carbon rear diffuser parts list	6
4. Preparatory work	7
5. Front carbon winglet installation	8
6. Rear carbon winglet installation	9
7. Install the carbon rear diffuser	10
8. Concluding work and coding	11

1. Front carbon winglet parts list

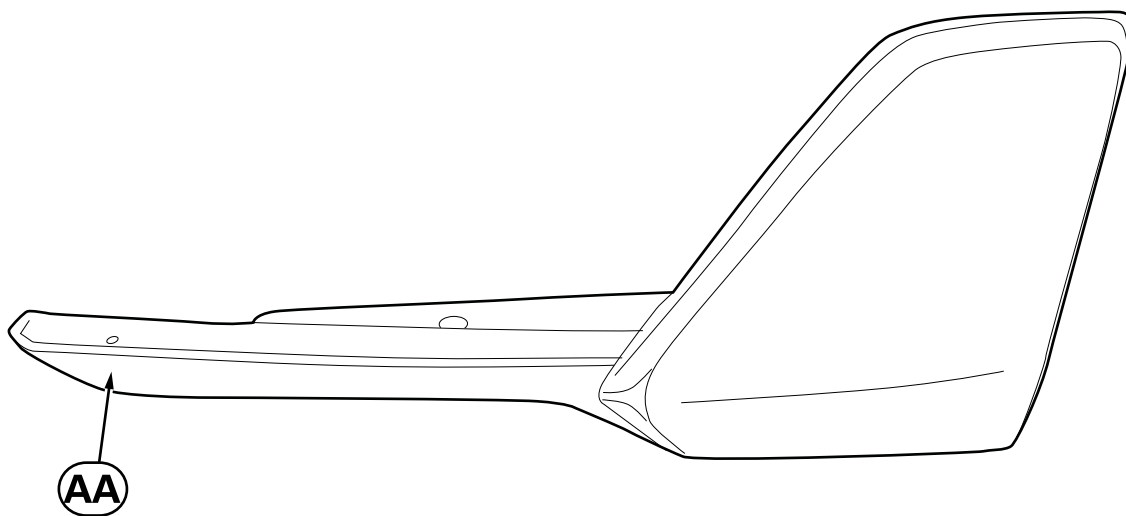


G05 0025 V

Legend

- A** Front carbon winglet, left/right (illustration shows left)
- B** Screws (4x)

2. Rear carbon winglet parts list

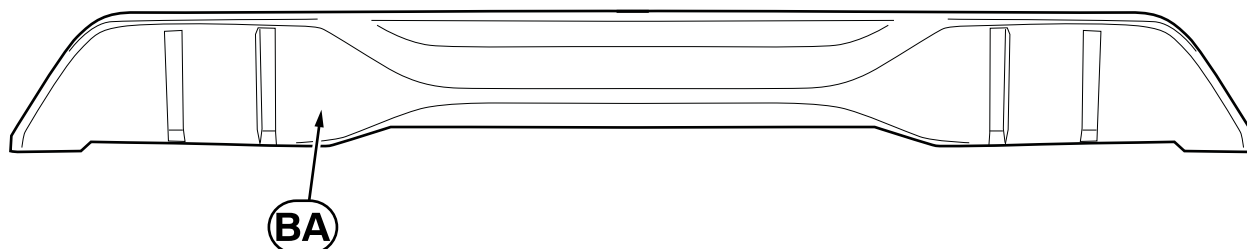


G05 0034 V

Legend

AA Rear carbon winglet, left/right (illustration shows left)

3. Carbon rear diffuser parts list



G05 0042 V

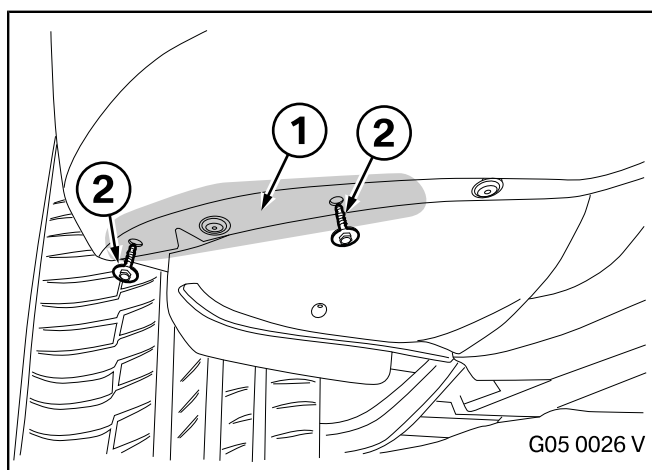
Legend

BA Carbon rear diffuser

4. Preparatory work

The following components must be removed first of all	ISTA/AIR No.
None	---

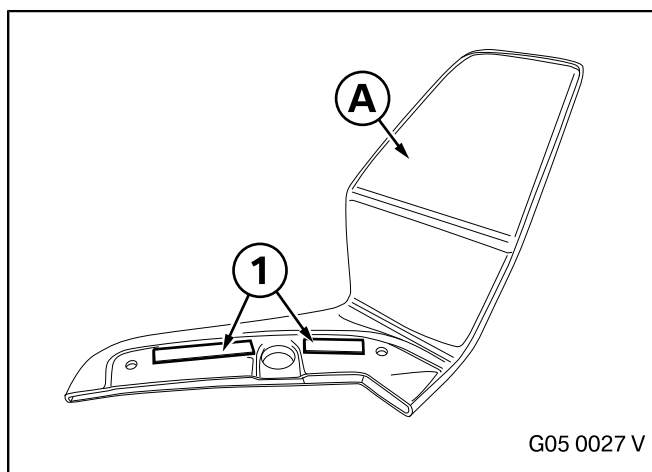
5. Front carbon winglet installation



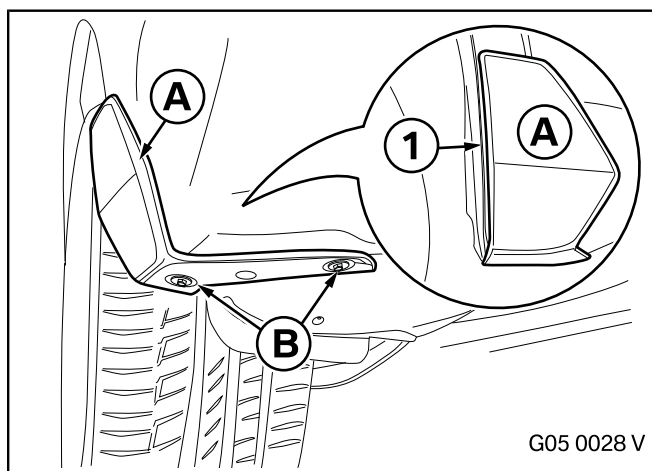
▣ The bonding surfaces must be completely dry, clean, and free from wax or grease. ◀

Clean the surface (1).

Remove the two screws (2).

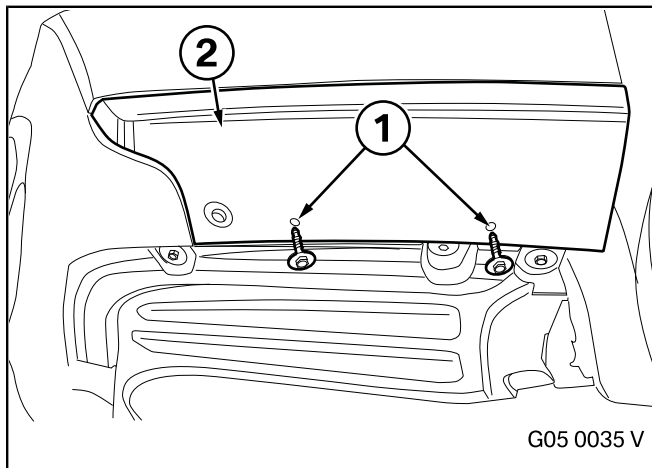


Remove the backing foils (1) from the adhesive tapes on the inside of the front carbon winglet **A**.



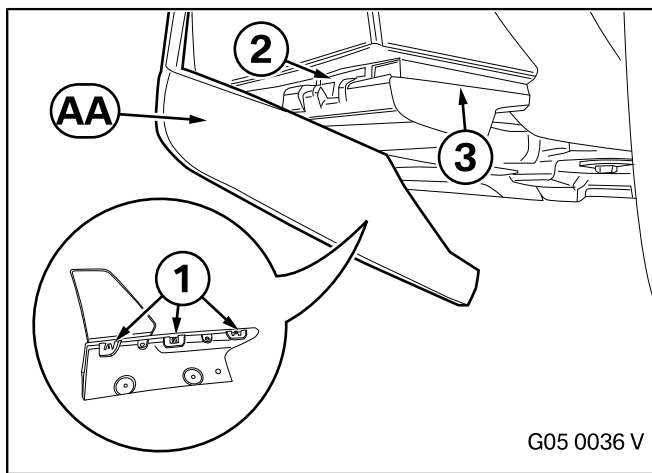
Position the front carbon winglet **A** flush with the edge of the wheel arch (1) and secure it with the two screws **B**.

6. Rear carbon winglet installation

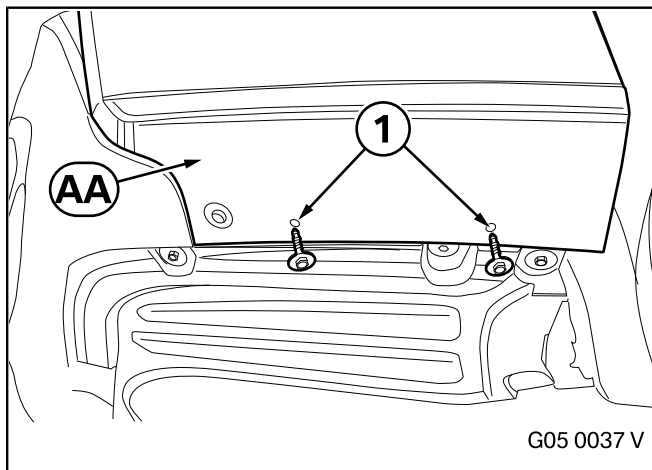


Remove the two screws (1) and keep them safe. They will be reused.

Remove the trim (2).

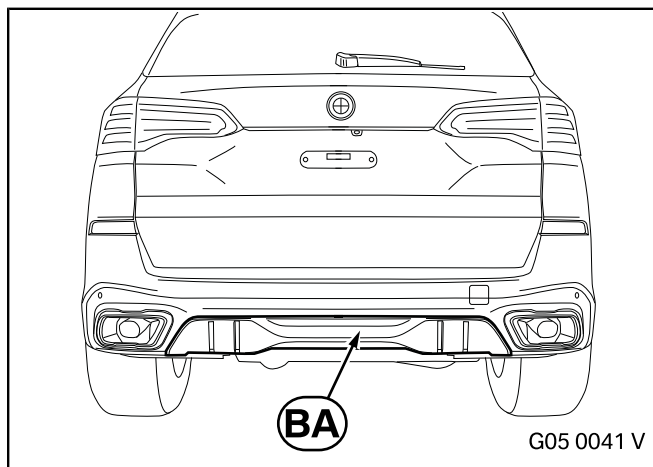


Position the rear carbon winglet **AA**. Ensure that the lugs (1) engage in the recesses (2). The rear carbon winglet **AA** must engage flush in the edge (3).



Secure the rear carbon winglet **AA** using the existing screws (1).

7. Install the carbon rear diffuser



Remove standard rear diffuser as described in **ISTA/AIR**.

Install the carbon rear diffuser **BA** in the same way as the standard component, as described in **ISTA/AIR**.

8. Concluding work and coding

For all vehicles, the retrofit system requires programming/coding if the carbon rear diffuser retrofit kit **BA** is installed.

- Connect the battery
- Connect the battery charger to the car
- Connect the car to the ISTA workshop system
- Open the ISTA/P car programming facility
- If using ISTA/P, please refer to the instructions provided in the ISTA/P application documentation
- K-word retrofit for carbon rear diffuser **BA**: Select "DSMO" via the - **Retrofits** - path and work through the action plan
- If necessary, carry out a vehicle test using the ISTA system, and note, or work through, any errors that has been recorded
- Conduct a function test
- Re-assemble the car
- Give the customer the customer information